



Cranberry Scale Insects in Oregon: Greedy Scale vs Brown Soft Scale

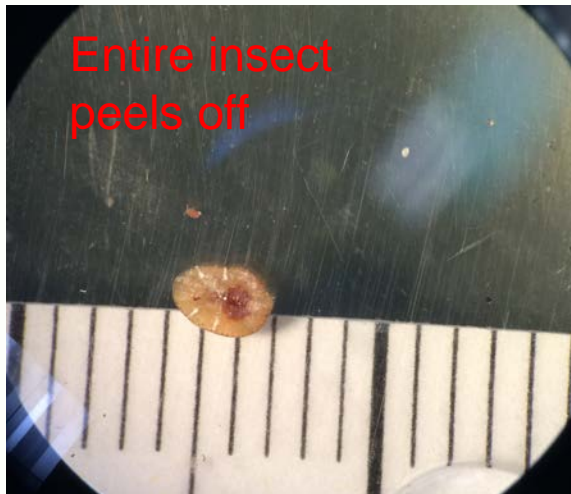
Cassie Bouska

OSU Extension Service

April 12, 2016

• Brown Soft Scale

- Soft Scale



• Greedy Scale

- Armored scale



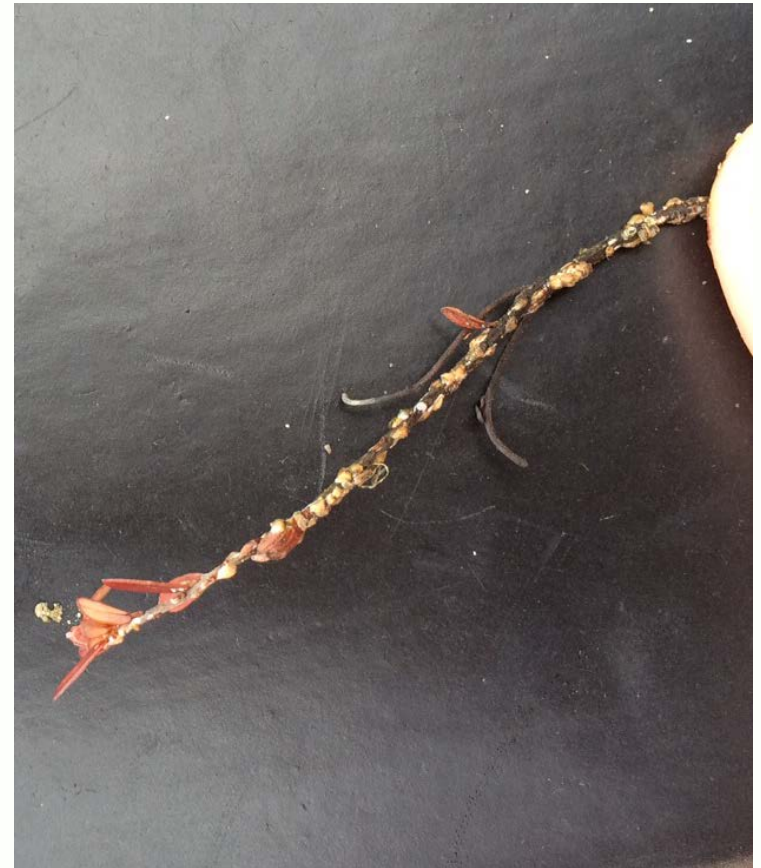
• Brown Soft Scale

- Usually found on leaves



• Greedy Scale

- Primarily found on stems



2

February 10, 2017

• Brown Soft Scale

- Produces honeydew
→ sooty mold



• Greedy Scale

- No honeydew = no sooty mold



3

February 10, 2017

• Brown Soft Scale

- Look for dark patches in beds in late winter/spring
 - Dark green to black



• Greedy Scale

- Look for circular spots of red vines or dead spots



Brown Soft Scale – sooty mold



Greedy scale – progression of infestation

- Fall 2015



- March 2016



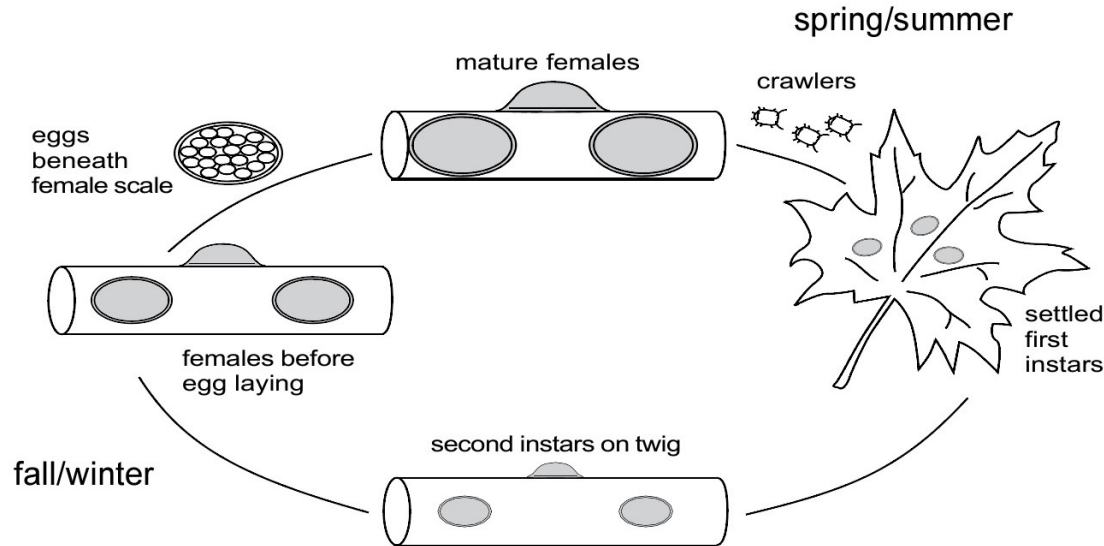
- An even closer look ...



Basic life cycle

Egg → Crawler → Nymph → Adult

- Crawler stage is most vulnerable ... but short!
 - 24-48 hours
 - And first week or so after settling as nymphs

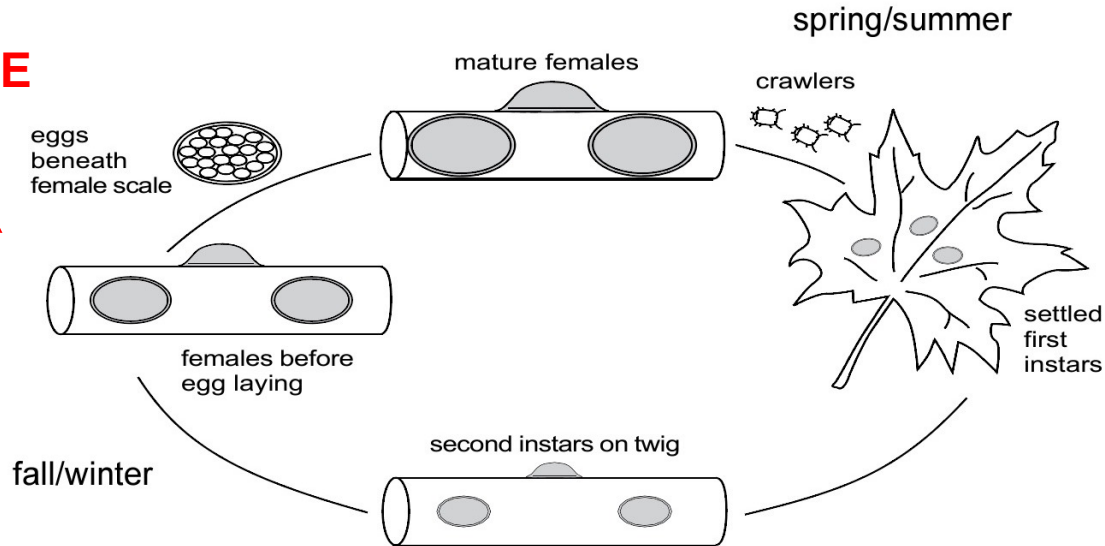
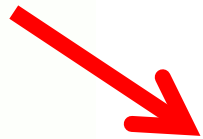


Basic life cycle

Egg → Crawler → Nymph → Adult

- Crawler stage is most vulnerable ... but short!
 - 24-48 hours
 - And first week or so after settling as nymphs

Target Brown soft scale HERE



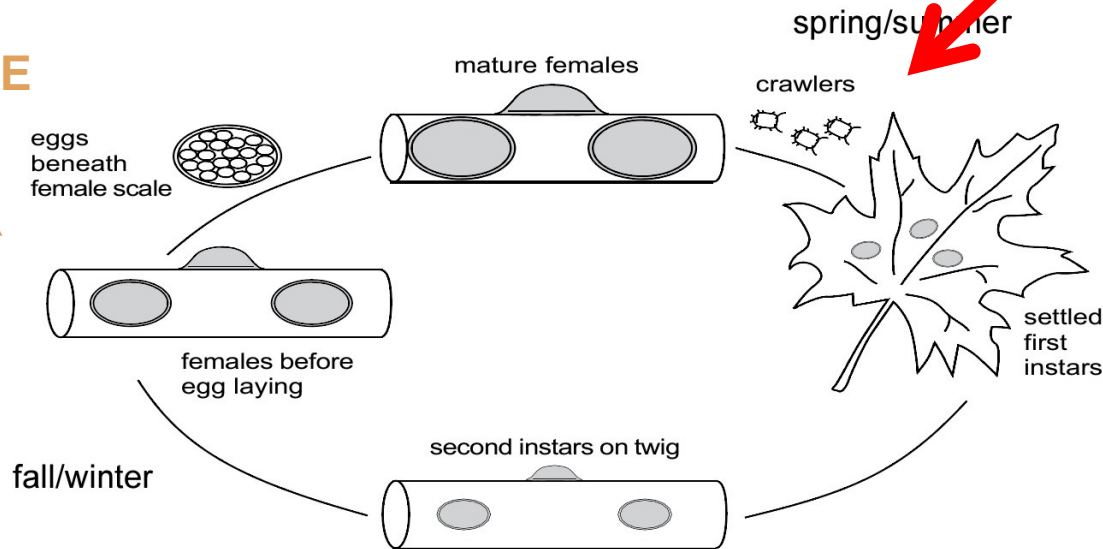
Basic life cycle

Egg → Crawler → Nymph → Adult

- Crawler stage is most vulnerable ... but short!
 - 24-48 hours
 - And first week or so after settling as nymphs

Target Brown soft scale HERE

Target Greedy Scale HERE



Treatment: timing and options

- Brown Soft Scale
- Greedy Scale
- Timing → NOW.
(late winter)
- Timing → crawlers...
- 2% insecticidal soap +/- OP
- OP (diazinon, etc)
- Testing other options

Greedy Scale – development update (April 4, 2016)



Eggs developing

Questions???